

LTI TruPulse 360/R Interface to ProStar GeoCorp's Pointman app



Quick Reference Guide



Overview

ProStar GeoCorp has written a Range/Azimuth interface for the TruPulse 360/R into their Pointman app for Android. Through the standard Locator function, laser measurements can automatically be recorded and offset positions calculated.

Compatible products

- TruPulse 360/R
- Pointman ver 2.0.4.384

Basic Steps

- Start Pointman and Connect Laser
- Configure Locator and GPS
- Record Offset Locations
 - Point
 - Line



Start Pointman and Connect Laser

The TruPulse 360/R's Bluetooth module is compatible with Windows and Android. The first time you connect the laser to your device, it will need to be paired.



1. In the laser Settings menu, turn On the Bluetooth “**bt_on**”. On the device, start Pointman and from the Menu, select **Settings** (Figure 1)
2. Under Devices, tap the **Configure Bluetooth** button (Figure 2)
3. Select your TP360 from the list, enter the passcode “1111” and tap **OK** (Figure 3)
4. Confirm the laser is paired to the device and press the device’s **Back** key to exit (Figure 4)

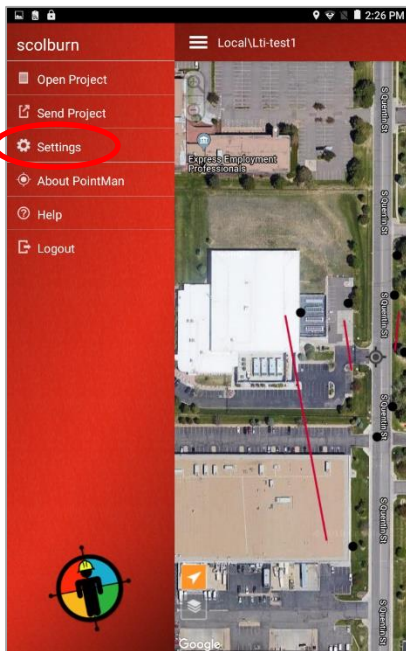


Figure 1

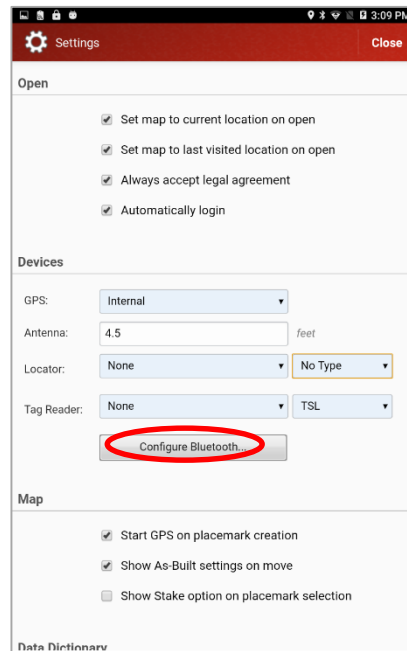


Figure 2

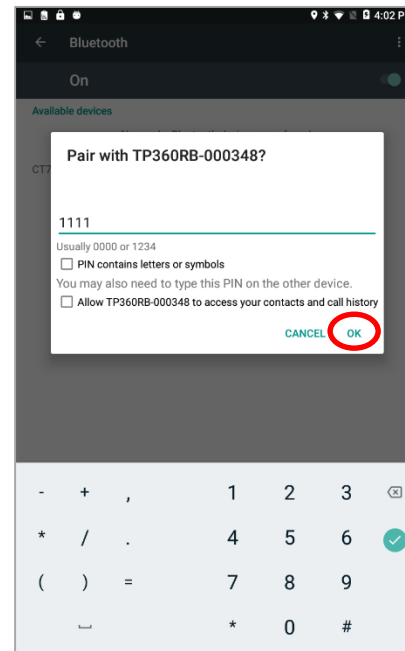


Figure 3

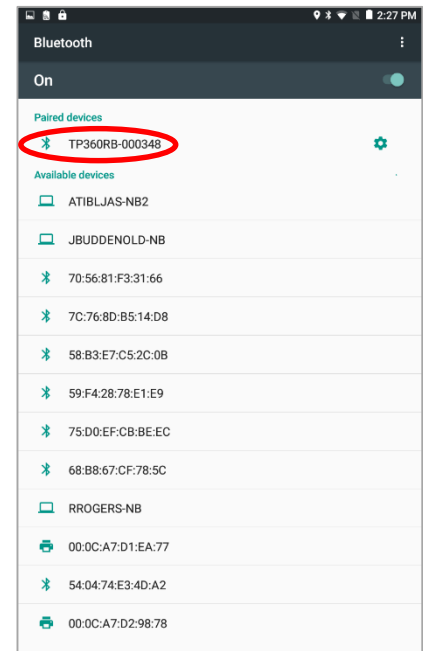


Figure 4

Configure Locator & GPS

The Pointman app has integrated the LTI TruPulse 360/R product as another choice for a Locator device.



5. Under Devices, pull down the list of **Locators** and select the laser (Figure 5)
6. Under the pull-down list for **Type**, choose Laser Tech (Figure 6)
7. Make sure your **GPS** type is correct and an **Antenna** height is entered (Figure 7)
*Note: the app assumes the laser is held at this same height when measuring
8. Confirm all settings are correct and tap **Done** (Figure 8)

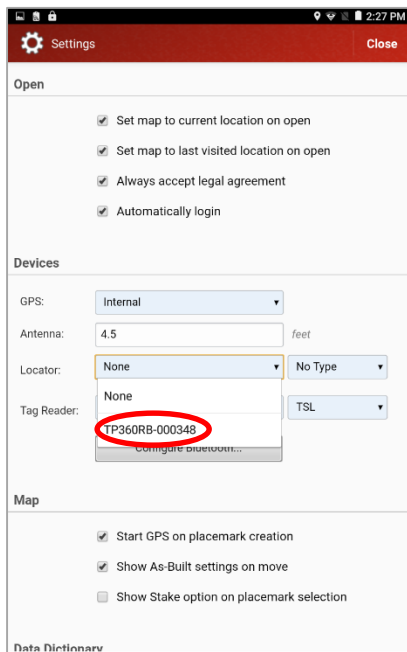


Figure 5

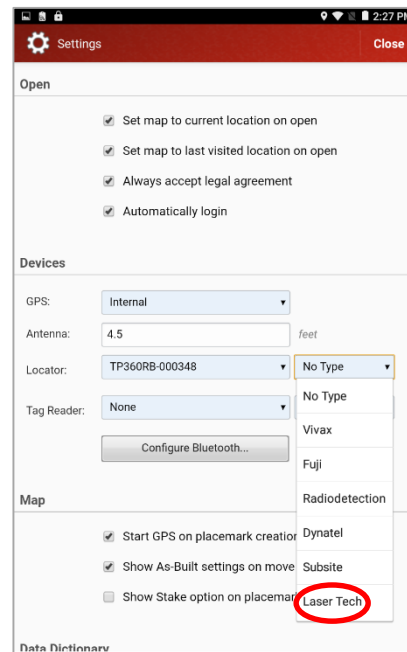


Figure 6

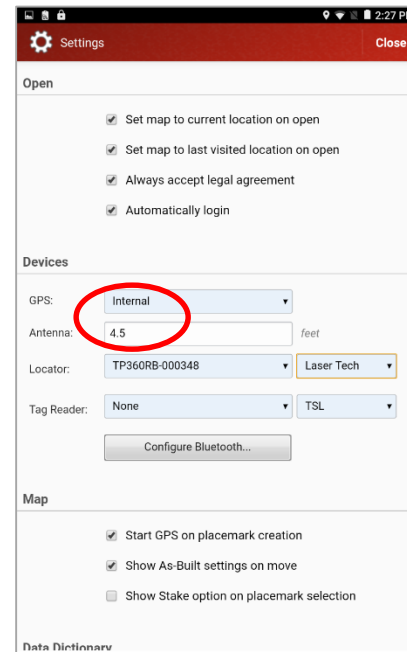


Figure 7

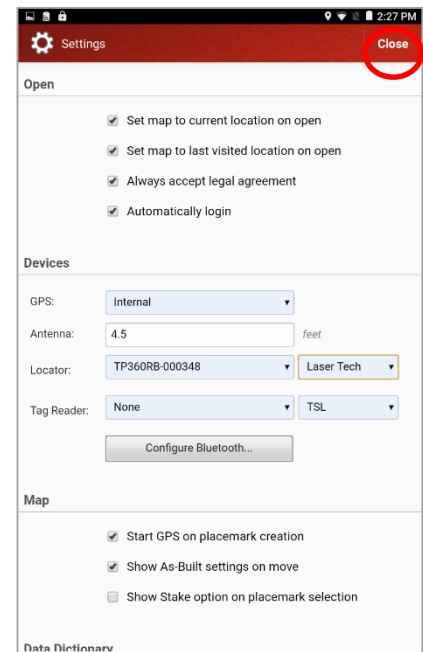


Figure 8

Record Offset Locations - Point

Point, Line and Area features may be easily mapped from one location.



9. Open a Project and select **New** at the upper right (Figure 9)
10. Select a Point feature type such as **Point of Concern** (Figure 10)
11. Put the laser in either HD or SD mode and **shoot** to the target (Figure 11)
12. Pointman will emit an audio **chirp** when the laser data is received and the **offset location** will display on the map (Figure 12)

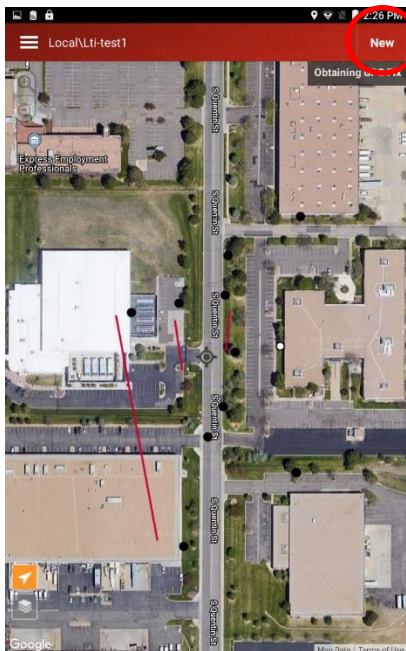


Figure 9

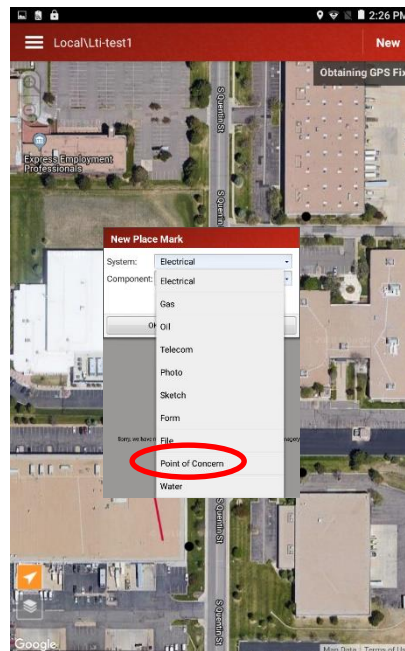


Figure 10



Figure 11



Figure 12

Record Offset Locations - Line

Point, Line and Area features may be easily mapped from one location.



13. Select a Line feature from the list, such as **Electrical** (Figure 13)
14. **Measure** to one end of the feature (Figure 14)
15. The **offset point** will display along with the distance measured to it (Figure 15)
16. Shoot the next point in the Line feature, the app will chirp and the **new point** will display (Figure 16). The distance to it, as well as from the last point, will be shown. Continue measuring to more points on the line in this same manner and tap **Finish** when done.

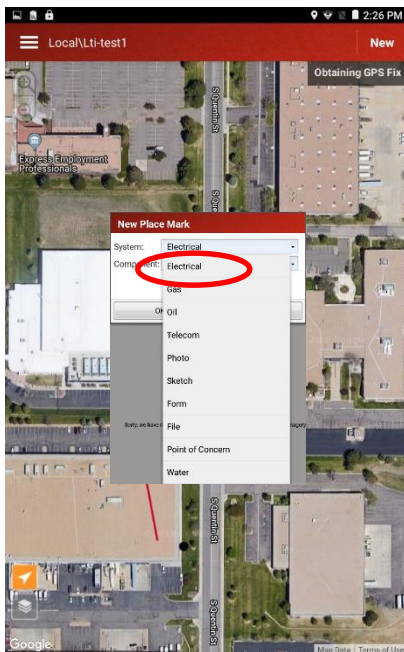


Figure 13



Figure 14



Figure 15



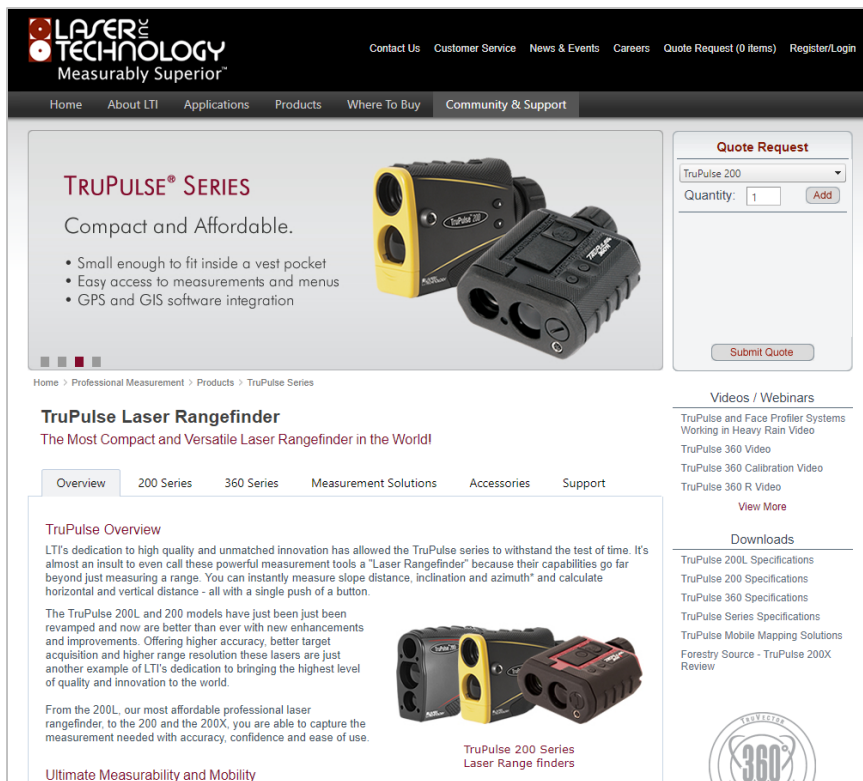
Figure 16

Product Resources

Product Page/User's Guides:

<https://www.lasertech.com/TruPulse-Laser-Rangefinder.aspx>

http://www.prostarcorp.com/pointman_locate.htm



The screenshot shows the Laser Technology website's product page for the TruPulse Laser Rangefinder. The page features the company logo, navigation menus, and a main content area with a product image, a quote request form, and detailed product information. The quote request form includes a dropdown for 'TruPulse 200', a quantity input set to '1', and a 'Submit Quote' button. The product information section includes a 'TruPulse Overview' and a 'Downloads' section with links to various specifications and videos.

LASER TECHNOLOGY
Measurably Superior™

Contact Us Customer Service News & Events Careers Quote Request (0 items) Register/Login

Home About LTI Applications Products Where To Buy Community & Support

TRUPULSE® SERIES

Compact and Affordable.

- Small enough to fit inside a vest pocket
- Easy access to measurements and menus
- GPS and GIS software integration

Quote Request

TruPulse 200

Quantity: 1 Add

Submit Quote

Home > Professional Measurement > Products > TruPulse Series

TruPulse Laser Rangefinder

The Most Compact and Versatile Laser Rangefinder in the World!

Overview 200 Series 360 Series Measurement Solutions Accessories Support

TruPulse Overview

LTI's dedication to high quality and unmatched innovation has allowed the TruPulse series to withstand the test of time. It's almost an insult to even call these powerful measurement tools a "Laser Rangefinder" because their capabilities go far beyond just measuring a range. You can instantly measure slope distance, inclination and azimuth* and calculate horizontal and vertical distance - all with a single push of a button.

The TruPulse 200L and 200 models have just been revamped and now are better than ever with new enhancements and improvements. Offering higher accuracy, better target acquisition and higher range resolution these lasers are just another example of LTI's dedication to bringing the highest level of quality and innovation to the world.

From the 200L, our most affordable professional laser rangefinder, to the 200 and the 200X, you are able to capture the measurement needed with accuracy, confidence and ease of use.

TruPulse 200 Series Laser Range finders

Ultimate Measurability and Mobility

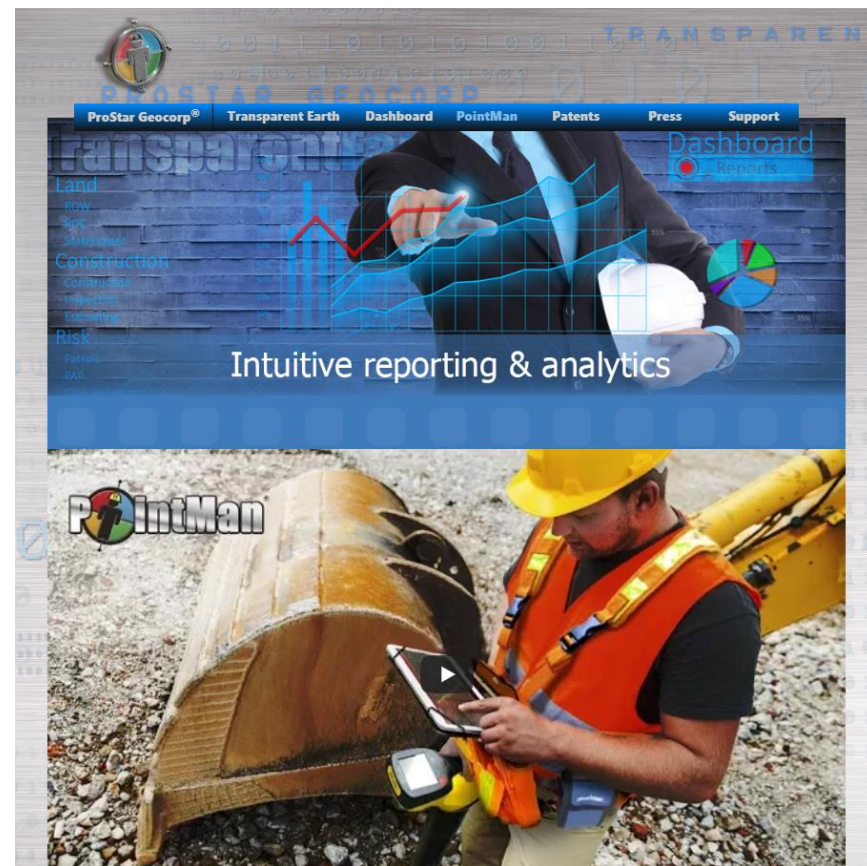
Videos / Webinars

- TruPulse and Face Profiler Systems Working in Heavy Rain Video
- TruPulse 360 Video
- TruPulse 360 Calibration Video
- TruPulse 360 R Video

View More

Downloads

- TruPulse 200L Specifications
- TruPulse 200 Specifications
- TruPulse 360 Specifications
- TruPulse Series Specifications
- TruPulse Mobile Mapping Solutions
- Forestry Source - TruPulse 200X Review



The screenshot shows the ProStar Geocorp website dashboard. The dashboard features a navigation menu with options like 'Dashboard', 'PointMan', 'Patents', 'Press', and 'Support'. The main content area displays a large image of a person in a suit pointing at a screen with various data visualizations, including a line graph and a pie chart. The text 'Intuitive reporting & analytics' is prominently displayed. Below the dashboard, there is a section for 'PointMan' showing a person in a hard hat and safety vest using a tablet on a construction site.

ProStar Geocorp® Transparent Earth Dashboard PointMan Patents Press Support

Intuitive reporting & analytics

PointMan

Stay informed! Find out about Laser Technology products, updates, and training resources by keeping track of us on FaceBook (/LaserTechnologyInc), Twitter (@LaserTechPro) and YouTube (/user/LaserTechPro)

Contact Laser Technology, Inc.

Questions regarding the interface of our TruPulse 360 into Pointman?

Please contact us at:

1.800.280.6113 or
1.303.649.1000

info@lasertech.com

Laser Technology, Inc.
6912 S. Quentin St.
Centennial, CO 80112

www.lasertech.com

