

**LASER TECH**

# LTI 20/20 TRUCAM® II

PHOTO/VIDEO LASER



High-Resolution Video Tracking and Images  
Easy-to-Learn, Simplified Operation  
Highly Secure and Encrypted Data

Enforce Day or Night  
Wireless Field Printing  
Scalable Integration

TRAFFIC SAFETY

**LTI**

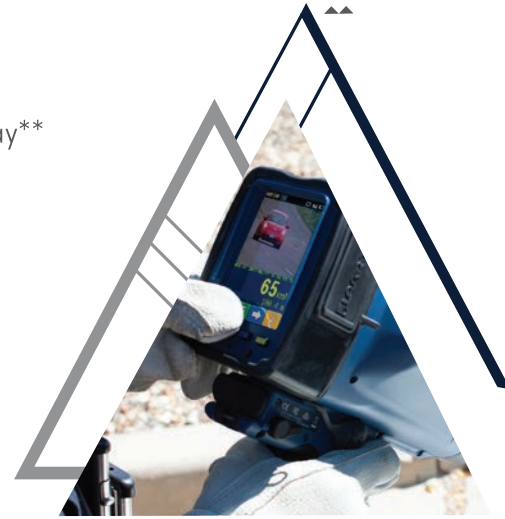
# LTI 20/20 TRUCAM® II

LTI is the only manufacturer that has more than 6,000 photo/video lasers being actively used today in over 90 countries. No other laser can match LTI's superior engineering, overall functionality or high level of customer satisfaction and support. Welcome to the next generation of video/photo enforcement: TruCAM II.



## High-Resolution Photo/Video

- Collect crystal-clear images up to 150 m away\*\*
- Quickly view license plate details with multiple zooming levels
- AdapTec™ auto adjusts the focus, iris, and shutter speed for you



## Large 9.4 cm Transflective LCD

- Clearly see what you are doing even under bright sunlight
- Easily learn how to navigate with the color-coded, graphical icons
- Use the touch screen or operate with gloves using color-coded buttons

## ULTIMATE VERSATILITY

- Record violations sooner with extended video tracking and speed capture range
- Be mobile with handheld use, or tripod-mount unit for automatic capture
- Enforce speeds of motorcycles or vehicles without a front license plate\*\*
- Designed to prevent detection by most laser jammers

## Prove more than just speeding:

- Misuse of HOV Lanes
- Distracted Driving
- Following Too Close
- Seat Belt Violations
- Aggressive Driving
- Driver Behavior Studies
- Obstructing Traffic



\*Note: Actual application images. TruCAM II and ShareView images are not simulated

\*\*License plate styles can affect the readability of license plate numbers at longer ranges



### SPEED MODE

Collect measurements and all relevant data for oncoming or departing vehicles in dense traffic\*



### AUTO MODE

Automatically capture images, such as school and construction zones\*



### DUAL-SPEED MODE

Enforce multiple speed limits within the same highway, and distinguish between commercial and private vehicles\*

## Scalable Integration

- Transmit violation data and image to a wireless printer using LTI's free tPrint app
- Multiple data transfer options: SD card, Wi-Fi, and Ethernet
- High-resolution images are suitable for use with Automatic Number Plate Recognition (ANPR)\*\*
- Integrate with back-office violation systems

## Legal Confidence

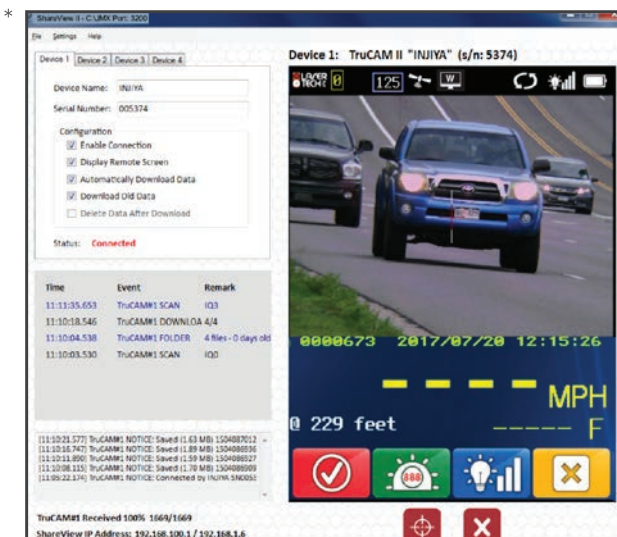
- Ensure true and accurate data by passing confidence tests while in speed mode
- Be confident if ever challenged in court, with the advanced 128-bit tamper-proof data

## Nighttime Enforcement (Optional)

- Enforce speeds at night; handheld or tripod mounted
- Toggle on the nighttime filter with a simple press of a button
- Capture higher-quality images with a compact illumination option



## REMOTE OPERATION



## ShareView™

- Operate the TruCAM II from inside your patrol vehicle, keeping officer safety in mind
- Transmit a live feed from the laser to a much larger screen for group training exercises
- Automatically transfer files from the laser to the PC

## tPrint (for Android™)

- Expand your options for wireless printing from your TruCAM II
- Display and print images and speed data with Android-compatible Wi-Fi or Bluetooth printers
- Send images of infractions down the road to an interceptor's device



### NIGHT MODE

Enforce at night or within tunnels\*



### DISTANCE BETWEEN CARS MODE

Measure the speed, traveling time, and distance between two vehicles\*



### REAR PLATE MODE

Measure speeds as vehicles approach and track them until the rear license plate is captured\*\*

# Specifications

(Subject to change without notice)

## LTI 20/20 TruCAM® II

|                          |                                |  |                       |                        |
|--------------------------|--------------------------------|--|-----------------------|------------------------|
| Performance              | Maximum Range                  | 1,200 m  |                       |                        |
|                          | Minimum Range                  | Speed Mode: 15.25 m; Weather Mode: 61 m; Auto Mode: 15.25 m  |                       |                        |
|                          | Range Accuracy                 | ± 15 cm absolute accuracy  |                       |                        |
|                          | Display Resolution             | Speed: ± 1 km/h  | Distance: ± 0.1 m     |                        |
|                          | Speed Range                    | 0 - 320 km/h approaching and departing   |                       |                        |
|                          | Speed Accuracy                 | ± 2 km/h   |                       |                        |
|                          | Optimum Camera Operating Range | 30 - 150 m   |                       |                        |
|                          | Optimum Focus Distance         | 135 m  |                       |                        |
|                          | Measurement Time               | 0.33 sec   |                       |                        |
| Input / Output           | Communications Port            | RS232 Serial<br>RS485, nighttime flash signal  |                       |                        |
|                          | WiFi                           | IEEE 802.11 a / b / g / n  |                       |                        |
|                          | Ethernet                       | 100M / 1G  |                       |                        |
|                          | Power                          | USB 5V DC external   |                       |                        |
|                          | Input                          | 6 buttons  |                       |                        |
| Power                    | Battery                        | 7.4V DC, Lithium-ion Polymer rechargeable battery pack, short circuit and overcharge protected, providing up to 8 hours of cordless operation  |                       |                        |
|                          | Input Voltages                 | Main Charger: 110V AC to 240V AC; 50/60 Hz input<br>Automobile Charger: 11V DC to 16V DC, cigarette plug connector with 3 Amp fuse   |                       |                        |
| Physical & Environmental | Construction                   | Composite polycarbonate outer shell; aluminum internal chassis   |                       |                        |
|                          | Dimensions (L x W x H)         | 23.1 cm x 11.7 cm x 32 cm  |                       |                        |
|                          | Weight                         | 1.6 kg including battery pack  |                       |                        |
|                          | Ratings                        | NEMA4 / IP55 water and dust-resistant  |                       |                        |
|                          | Operating Temperature          | Operating: -10° to 60° C   | Charging: 0° to 45° C | Storage: -20° to 60° C |
| Hardware                 | Capture Data Storage           | Removable SD Card: Up to 32 GB   |                       |                        |
|                          | Display                        | 9.4 cm, 480 x 640 pixel, 24-bits per pixel (bpp), touch-sensitive  |                       |                        |
|                          | Camera Sensor                  | 5 megapixel (2592 x 1944)  |                       |                        |
|                          | Lens                           | Custom lens, auto-focus, auto-iris, auto-shutter speed, auto-day/night filter  |                       |                        |
|                          | GPS Receiver                   | 22 tracking, 66 acquisition  |                       |                        |
| Software                 | Operating System               | Linux with custom device drivers   |                       |                        |
|                          | Video and Still Images Sizes   | 1280 x 960 cropped to focus on the area of interest  |                       |                        |
|                          | Pre-measurement Video          | The amount of video captured prior to speed measurement is 1.2 seconds. The frame rate for this 1.2 seconds and the track storage after the speed measurement are determined by the operator |                       |                        |
|                          | Data Encryption                | AES-128, U.S. Federal Information Processing Standards, Advanced Encryption, Standard 128-Bit  |                       |                        |